

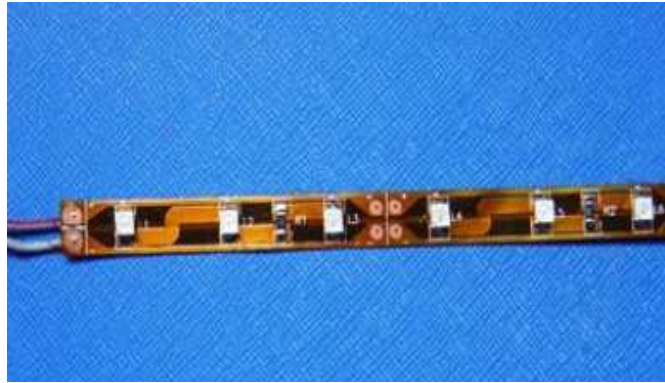


# SMD LIGHT RIBBON

## OF-LRS3528G GREEN



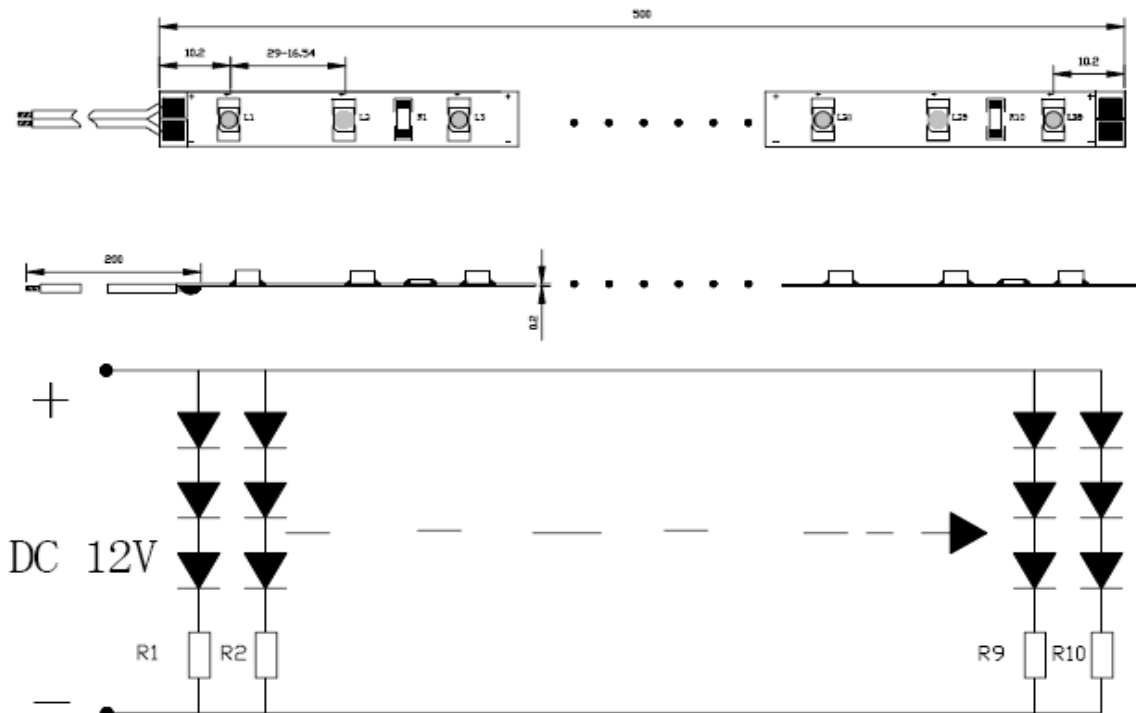
**ATTENTION**  
 OBSERVE PRECAUTIONS  
 FOR HANDLING  
 ELECTROSTATIC  
 DISCHARGE  
 SENSITIVE  
 DEVICES



### Features

- 500MMX8MM SMD LIGHT RIBBON ( 30-LED )
- PRINTED CIRCUIT BOARD THICKNESS : 0.2MM
- WORKING VOLTAGE : 12V DC.
- WORKING CURRENT : 200MA.
- LED VIEW ANGLE(2θ1/2):120°.
- PACKAGE: 10PCS / REEL.

### Package Dimensions :



### Notes:

1. All dimension units are millimeters.
2. All dimension tolerance is  $\pm 1$ mm unless otherwise noted.



## SMD LIGHT RIBBON

### Absolute Maximum Rating at TA=25°C

Parameter	Symbol	Absolute Maximum Rating	Unit
Forward Current	IF	200	mA
Power Dissipation	PD	2,4	W
Electrostatic discharge	ESD	400	V
Operating Temperature	Tstg	-25 ~ +60	°C
Storage Temperature	Tstg	- 40 ~ + 80	°C

### Electrical / Optical Characteristics at TA=25°C

Parameter	Symbol	Condition	Min	Typ	Unit
Forward Voltage DC	VF	IF=200mA		12	V
Dominant Wavelength	$\lambda D$	IF=200mA	521	525	nm
Luminous flux	$\phi V$	IF=200mA		55	lm
Recommend Forward Current	IF(rec)	IF=200mA		200	mA

Notes:Tolerance of measurement of luminous intensity $\pm 15\%$ .

### Package means



### APPLICATIONS

- EDGE-LIGHTING OF TRANSPARENT OR DIFFUSED MATERIALS.
- PATH&CONTOUR MARKING.
- ILLUMINATED SIGNS.
- MOOD LIGHTING .