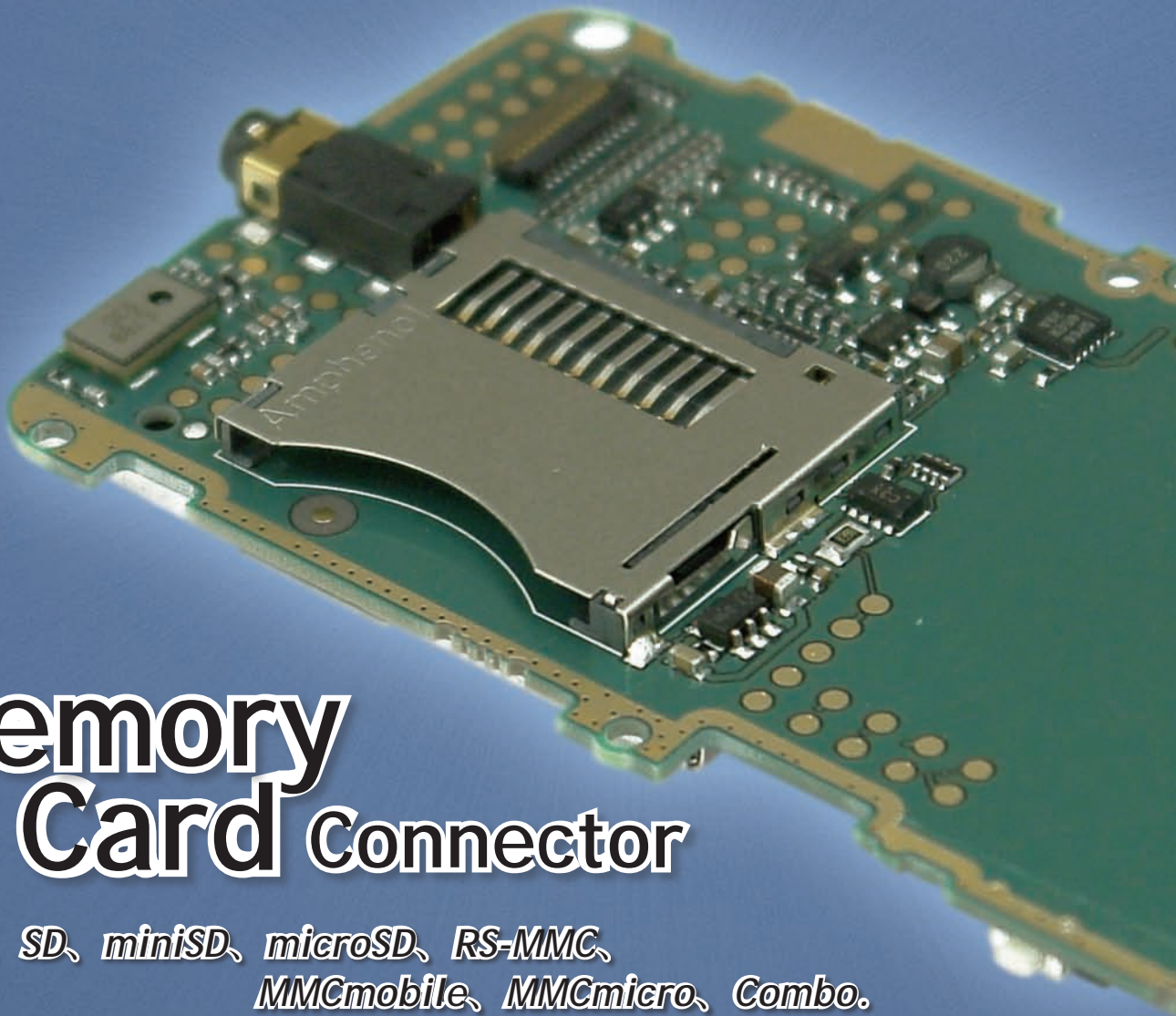


Amphenol



Memory Card Connector

CF, SD, miniSD, microSD, RS-MMC, MMCmobile, MMCmicro, Combo.

Contents:

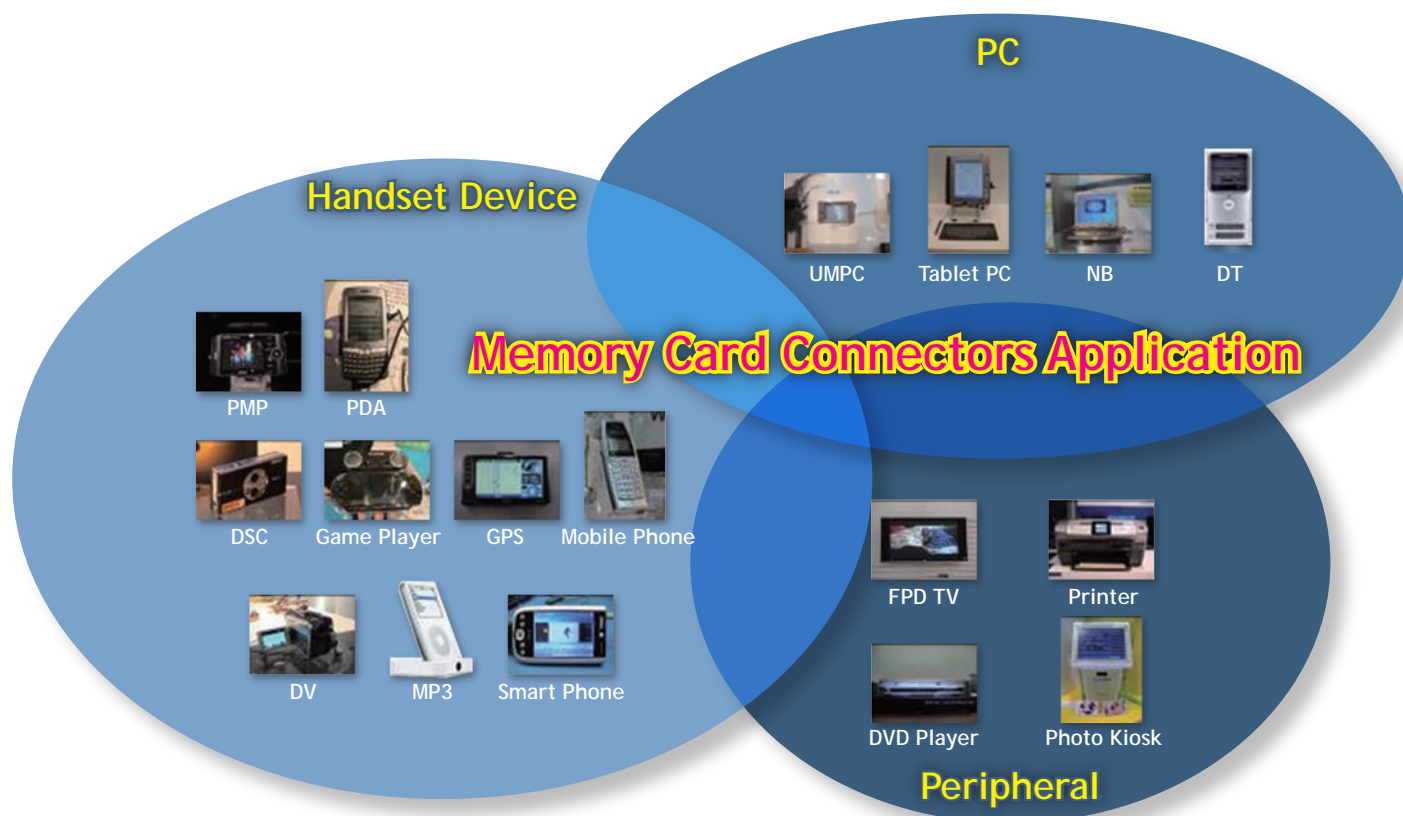
Application.....	2	CF and MMC Series.....	5
SD.....	3	Combo Type Series.....	6,7
microSD and miniSD.....	4		

Amphenol

Memory Card Connectors Application

Amphenol is establishing a leading presence in the memory card connector industry for 4C (Computer, Communication, Consumer electronics, and Car electronics) applications. Through enhanced product

development, manufacturing, and quality assurance we offer better performance and smaller size products at significantly lower prices.



Connector Types	Applications
CF	DT PCs, IPCs, FPD TVs, DVD Players, Printers, Photo Kiosks, DSLRs.
SD	DSCs, DVs, Smart Phones, PDAs, PMPs, GPS Devices, Game Players, DT PCs, FPD TVs, DVD Players, Printers, Photo Kiosks.
miniSD	DSCs, DVs, Mobile Phones, Smart Phones, PDAs, MP3s, GPS Devices, Game Players.
microSD	Mobile Phones, MP3s.
RS-MMC	DSCs, DVs, Mobile Phones, Smart Phones, PDAs, MP3s, GPS Devices, Game Players.
MMCmobile	DSCs, DVs, Mobile Phones, Smart Phones, PDAs, MP3s, GPS Devices, Game Players.
MMCmicro	Mobile Phones, MP3s.
Combo	NB PCs, DT PCs, FPD TVs, DVD Players, Printers, Photo Kiosks.

Amphenol

Memory Card Connectors

SD



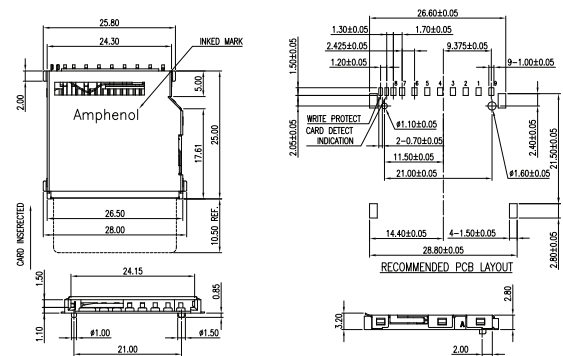
SD memory card connectors could be applied to DSCs, DVs, Smart Phones, PDAs, PMPs, GPS Devices, Game Players, DT PCs, FPD TVs, DVD Players, Printers and Photo Kiosks.

SD



GSD09001PEU

Normal, 10u", Ivory, RoHS

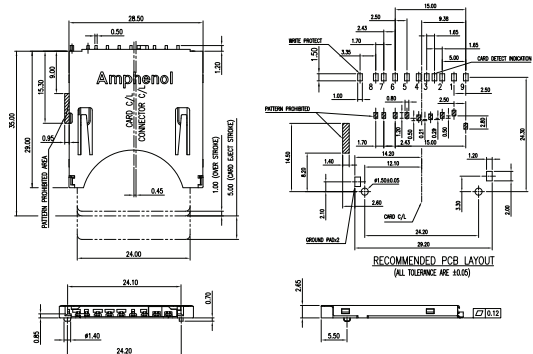


SD



GSD09002PEU

Normal, P/P, 10u", H=2.65mm, Black, RoHS

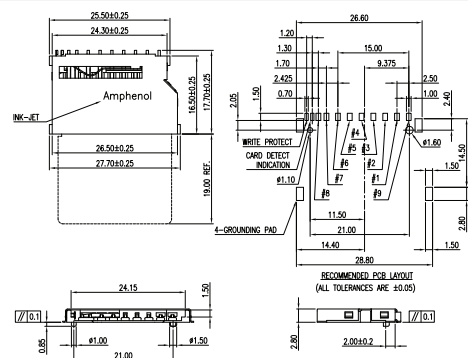


SD

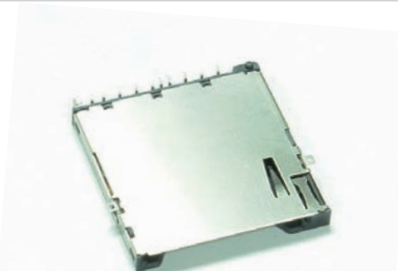


GSD09003PEU

Normal, 10u", Short Type, Ivory, RoHS

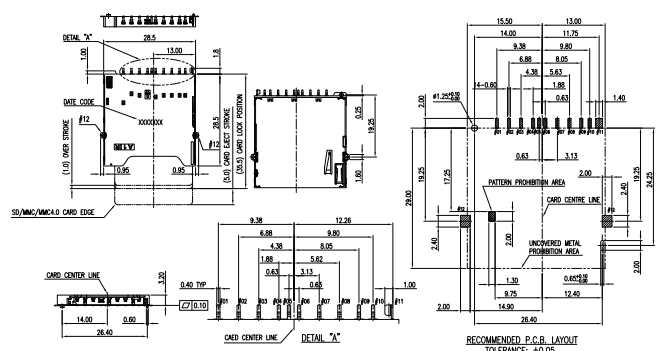


SD



GSD09011PEU

Reverse, P/P, 10u", Black, RoHS





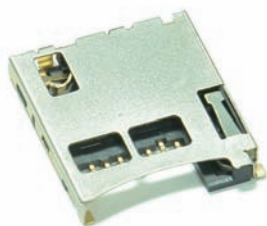
miniSD

[illegible]

microSD

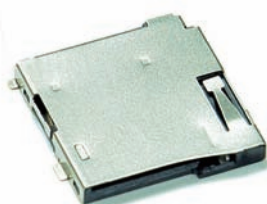
GTFH08121HEU

Figure 1: Recommended PCB layout (component side) for the 1450. The figure includes three diagrams: a top view of the component side showing dimensions for the component footprint and mounting holes, a side view of the component showing dimensions for the package height and mounting holes, and a side view of the component showing dimensions for the package height and mounting holes. The dimensions are in millimeters (mm).



microSD

GTFP08121HEU

[illegible]

microSD

GTFP08131LEU

[illegible]

Amphenol

Memory Card Connectors

CF and MMC Series



CF memory card connectors could be applied to DT PCs, IPCs, FPD TVs, DVD Players, Printers, Photo Kiosks, DSLRs.



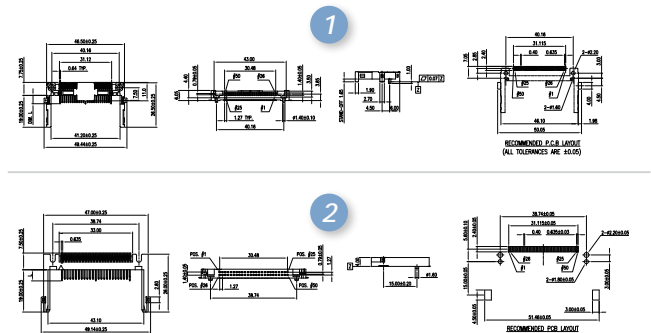
MMC memory card connectors could be applied to : DSCs, DVs, Mobile Phones, Smart Phones, PDAs, MP3s, GPS Devices, Game Players.

CF

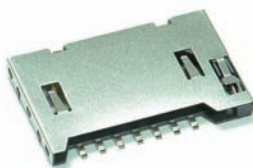


1. G659CEU120200P 2. G659CEU150100P

1. Type I, Reverse, G/F, 1.65mm Stand-Off, Ivory, RoHS
2. Type I & II, Normal, Low Profile, G/F, Ivory, RoHS

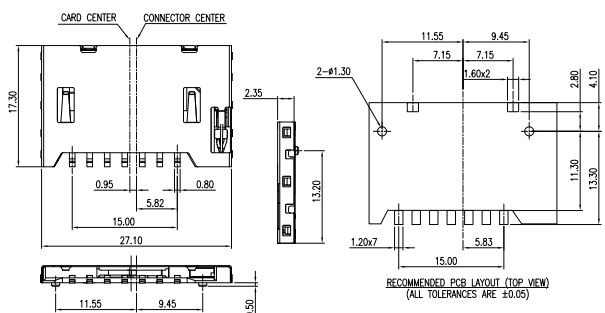


RS-MMC



GMMC004CEU

Normal, P/P, G/F, Black, RoHS

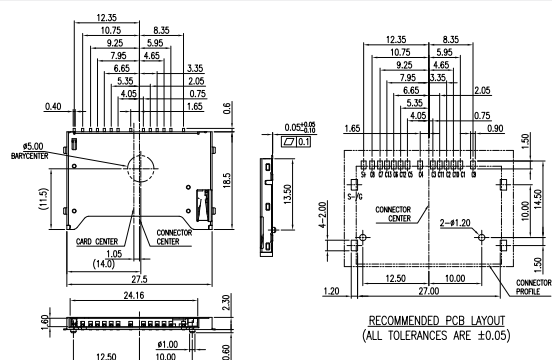


MMCmobile

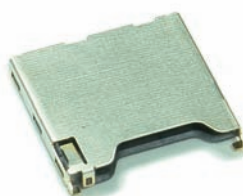


GMMC001LEU

Normal, P/P, 10u", Black, RoHS

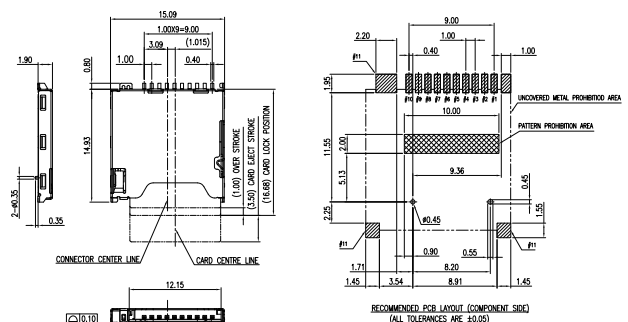


MMCmicro



GMMC005PEU

Normal, P/P, 10u", Black, RoHS



Amphenol

Memory Card Connectors

Combo Type Series



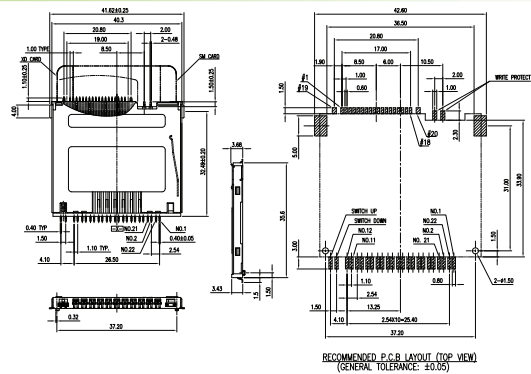
Combo Type memory card connectors could be applied to NB PCs, DT PCs, FPD TVs, DVD Players, Printers and Photo Kiosks.

2 in 1

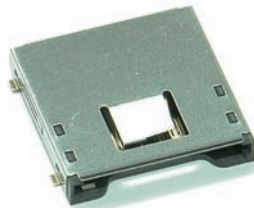


GMC020020SEU

SM/xD, Normal, G/F, Black, RoHS

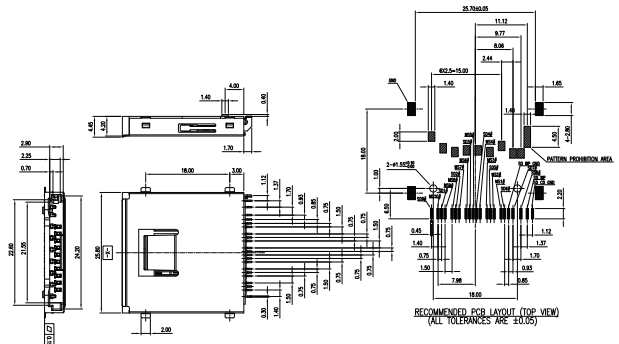


3 in 1



GMC030030SEU

SD/MMC/MS, Normal, G/F, Black, RoHS

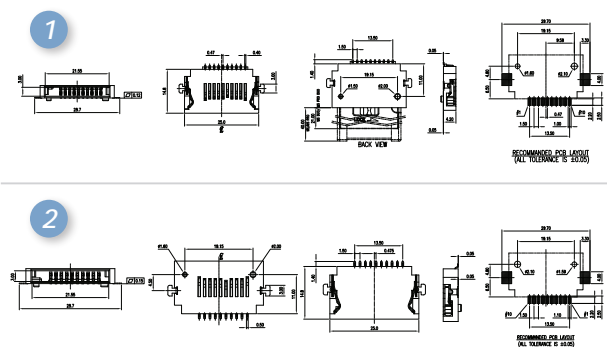


4 in 1

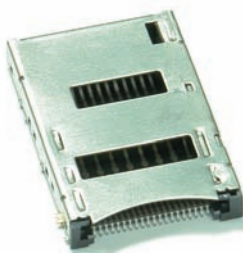


1. GMC040030SEU 2. GMC040040SEU

MS/MS Duo/MS PRO/MS PRO Duo,
1. (GMC040030SEU) → Reverse,
2. (GMC040040SEU) → Normal,
G/F, Black, RoHS

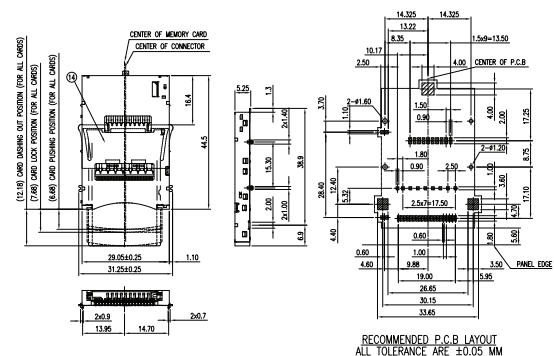


4 in 1



GMC040053TEU

SD/MMC/MS/xD, Normal, P/P, 15u", Black, RoHS



Amphenol

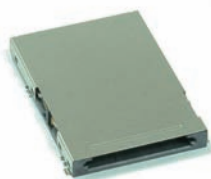
Memory Card Connectors

Combo Type Series



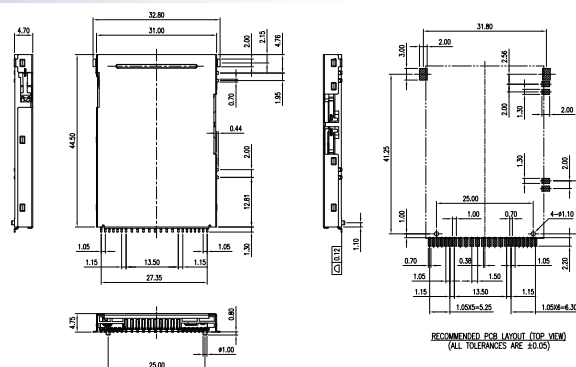
Combo Type memory card connectors could be applied to NB PCs, DT PCs, FPD TVs, DVD Players, Printers and Photo Kiosks.

5 in 1



GMC050043EU

SD/MMC/MMCplus/MS/MS PRO, Normal
P/P, 15", Black, RoHS

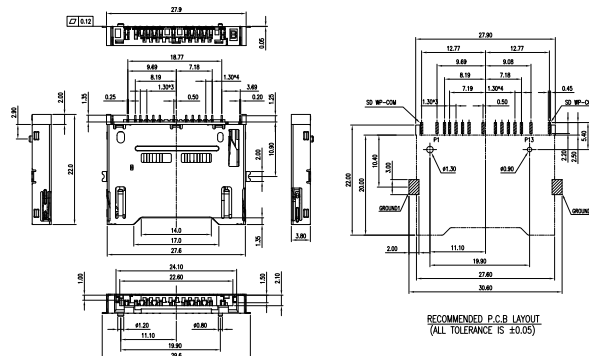


5 in 1



GMC050050SEU

SD/MMC/MMCplus/RS-MMC/MMCmobile, Normal
G/F, Black, RoHS

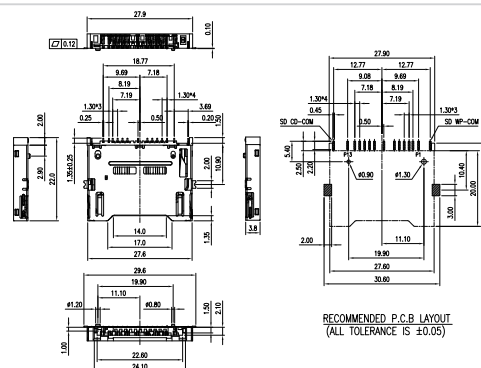


5 in 1



GMC050060SEU

SD/MMC/MMCplus/RS-MMC/MMCmobile, Reverse
G/F, Black, RoHS

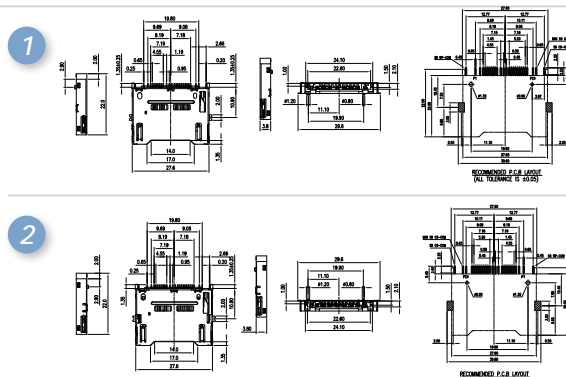


6 in 1



1. GMC060030SEU 2. GMC060040SEU

SD/miniSD/MMC/MMCplus/RS-MMC/MMCmobile,
1. (GMC060030SEU) → Normal,
2. (GMC060040SEU) → Reverse,
G/F, Black, RoHS



Amphenol