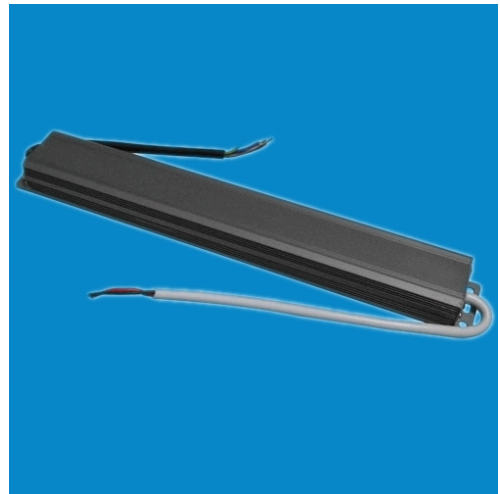


45W waterproof power supply

ZLV-45-24

Feature:

- Suitable for LED lighting and LED sign applications
- Protections: Short circuit / Overload / Over Voltage / Over Temperature
- IP67 design for indoor or outdoor installations
- Efficiency: 80%
- 100% full load burn-in test
- Storage temperature: -40-80°C
- Operating temperature: -25-45°C
- Certificate: CE, ROHS
- MTBF: Min250Khrs
- Warranty: One and a half years
- Life time: 60,000 hours



Specification:

Model	ZLV-45-24	
OUTPUT	DC Voltage	24±0.5VDC
	Rated power	45W
	Max current	1.88A
INPUT	Voltage	170-250VAC
	Frequency	47 ~ 63 Hz
	AC Current	0.37A
	Efficiency (Typ.)	80%
PROTECTION	Overload	20% exceed is allowing
	Short Circuit	Auto recovery
	Over Voltage	≤255V
	Over temperature	≤85°C
OTHERS	Cooling	By convection
	Withstand voltage	2200VAC
	Dimension/Weight	257*36*28mm/430g
	Packing/Carton Size	1 pcs
	Cable	0.75sq.mm. VDE wire 200mm
	Housing Material	Aluminum
CE	CE Safety Standard	Compliance to EN61347-1:2008&EN 61347-2-13:2006
	EMI conduction & radiation	Compliance to EN 55015: 2006+A1: 2007 EN 61547: 2004
	Harmonic Current	Compliance to EN 61000-3-2: 2006 EN 61000-3-3: 1995+A1: 2001+A2: 2005