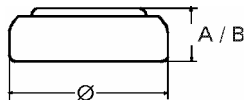


Data Sheet

Type Number 20319
Designation IEC SR 527 SW
System Silver oxide / Zinc / NaOH



Nominal Voltage 1,55 V
Typical Capacity C 22,5 mAh
 Load 47 kOhm, at 20°C down to 1.2 V

Weight (approx.) 0,29 g
Volume 0,07 ccm
Coding..... Date of Manufacturing Month/Year

Temperature Ranges

	min	max.
Storage	-10°C	60°C
Discharge	-10°C	60°C

Dimensions

	min	max.
Diameter (Ø).....	5,65	5,80
Height (A/B)	2,50	2,70

Segment Watch

Main Applications Watch
 Photo
 Electronic

Typical Capacities (at 20°C)

Discharge Type	Load	End Voltage:	1.2V
Continuous 24h/d,7d/	68100 Ω	Time:	610 h