

ATTENTION
OBSERVE PRECAUTIONS
FOR HANDLING
ELECTROSTATIC
DISCHARGE
SENSITIVE
DEVICES

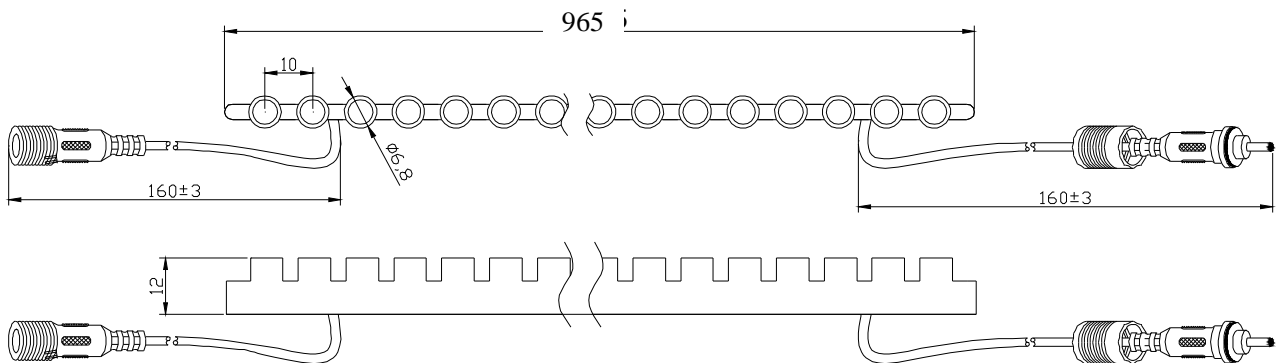
OF-STR5W PURE



Features

- 965MMX12MM FLEX HORSE (96-LED) .
- WORKING VOLTAGE : 12V DC.
- WORKING CURRENT: 640MA.
- LED VIEW ANGLE(2 1/2):120 ° .
- PACKAGE: 2PCS / REEL.

Package Dimensions



Notes:

1. All dimension units are millimeters.

Absolute Maximum Rating at TA=25

Parameter	Symbol	Absolute Maximum Rating	Unit
Forward Current	IF	640	mA
Power Dissipation	PD	7.68	W
Electrostatic discharge	ESD	800	V
Operating Temperature	Topr	-25 +60	
Storage Temperature	Tstg	-40 +80	

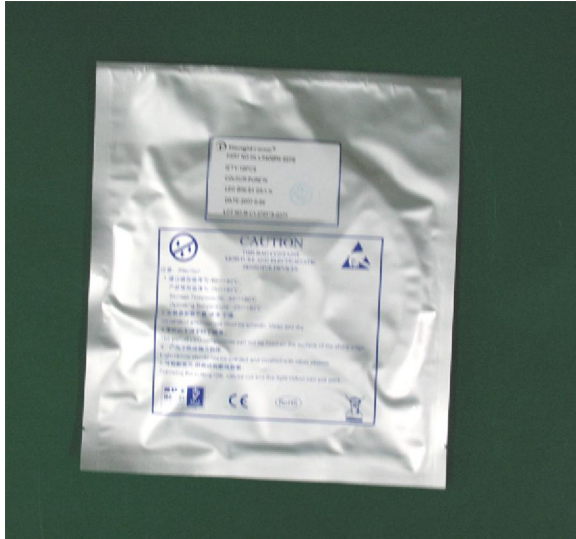
Electrical / Optical Characteristics at TA=25

Parameter	Symbol	Condition	Min	Typ	Max	Unit
Forward Voltage DC	VF	IF=640mA	--	12	--	V
Dominant Wavelength	D	IF=640mA	--	--	--	nm
Temperature Color	TC	IF=640mA	6000	7000	--	K
Luminous flux	V	IF=640mA	336	384	-	lm
Recommend Forward Current	IF(rec)	--	--	640	--	mA

Notes:

- 1 . Tolerance of measurement of luminous intensity±15%.
- 2 . The above is 1 PCS specification parameter.

Package means



APPLICATIONS

- CHANNEL-LETTER BACKLIGHTS.
- ILLUMINATED SIGNS.
- MOOD AND SPECIALTY LIGHT.